

# EOTC

EDUCATION OUTSIDE THE CLASSROOM



Life's more fun on

**SNOWPLANET™**

**Snowplanet** provides a unique learning experience outside the classroom.

From structured sessions of skiing and snowboarding in our **Snow PE** lessons to free-flow experiences; exploring tubing, skiing or snowboarding at the students' own pace; in our **Snow FUN** sessions.

Having the opportunity to participate in Snowsports adds to all dimensions of wellbeing including development of motor skills along with opportunities to learn about challenge, perseverance, problem-solving and community physical activities - regardless of prior experience, knowledge or ability.

Snowsports offer students the ability to work with their peers, achieve new goals and learn in a different environment, as well as value that environment. This learning can begin in school, be developed at Snowplanet and continue once the student returns to school.

At Snowplanet students can:

- Gain credits in **NCEA, Cambridge, IB Physical Education** and **Outdoor Education**
- Enrich their EOTC learning by using our highly experienced instructors
- Be rewarded on your school's next **Rewards Trip, End-of-Year Trip or Fun Day Out**
- Learn a new sport and acquire new skills by creating a **Snowsports PE Term Program**
- Join the school's ski or snowboard team and train at Snowplanet in one of our **High Performance 365 Athlete Programs**



**Contact us today!**

(09) 427 0193 | [schools@snowplanet.co.nz](mailto:schools@snowplanet.co.nz)

# SNOW FUN

## SNOW FUN

Snowplanet's SNOW FUN products are free-flow sessions in our unique snow dome that provide an opportunity for students to develop in:

- Health and Physical Education
- Enhance all areas of Hauora
- Education Outside the Classroom
- Participation and Contribution
- Learn and develop new motor skills

## 1hr Tubing

School Tubing is a fun experience or reward for School Groups where they can experience the snow and the thrill of tubing in a safe but exciting environment. Tubing is suitable for all abilities and requires no formal instruction or training, so it is quick to get into and participate.

**School Tubing is a 1hr pass with the following benefits:**

- 1hr snow tubing pass including boot hire and tube hire
- Excludes clothing and glove hire
- Snowplanet instructors are not provided
- We encourage adult/teacher supervision



## 2hr Snowsports

School Snowsports introduces students to snow sports in an adventurous and encouraging environment with experienced staff that make their first time on snow one to remember. The class is non-structured with Snowplanet Instructors merely supervising, encouraging students and offering tips as students engage in experiential learning.

**School Snowsports is a 2hr pass with the following benefits:**

- 2hr lift pass including equipment hire (skis/snowboard, boots & helmet)
- Excludes clothing and glove hire
- 2hr supervision from Snowplanet instructors (*approx. 1 instructor per 15 students*)
- We allow adult/teacher supervision



## 4hr Freeride

School Freeride offers students the opportunity to challenge themselves on the slopes. Students may be experienced at Snowsports, or want to participate and contribute at their own pace with the help of their peers during this non-supervised session.

**School Freeride is a 4hr pass with the following benefits:**

- 4hr lift pass including equipment hire (skis/snowboard, boots & helmet)
- Excludes clothing and glove hire
- Snowplanet does not supervise this session
- We encourage adult/teacher supervision

# SNOW PE

## SNOW PE

Snowplanet's Snow PE products are structured sessions in our unique snow dome that provide an opportunity for students to learn and develop their ability to ski or snowboard.

Skiing and Snowboarding can be enjoyed at any level and are an ideal form of Physical Education to develop and improve motor skills in a healthy and fun, yet challenging environment. Careers are available for athletes, coaches, administrators, and business people alike.

Snow PE can be taken as a one-off visit or as part of a tailored programme over a number of sessions. We customise each Snow PE session for skiers and snowboarders from beginner through to advanced. Depending on level, classes can be tied to all strands and levels of the Health and Physical Education curriculum, incorporating Physical Activity, Sports Studies and Outdoor Education as key areas of learning.

## **1hr Snow PE**

Our 1hr Snow PE class streams skiers and snowboarders into small classes based on their level and ability. Classes offer structured learning and progression with the sole aim of taking students to their next level in their chosen sport. Our instructors can customise content to the NZ curriculum.

**School 1hr Snow PE is a 1hr pass with the following benefits:**

- 1hr lift pass including equipment hire (skis/snowboard, boots & helmet)
- Excludes clothing and glove hire
- 1hr structured lesson from Snowplanet instructors (*approx. 1 instructor per 8 students*)
- We do not require adult/teacher supervision

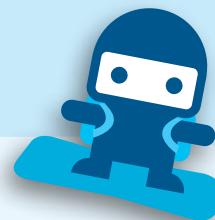
## **4hr Snow PE**

Our 4hr Snow PE class combines the benefits of our 1hr Snow PE lesson with an additional 3 hours freeride allowing students to participate and contribute at their own pace with the help of their peers during the non-supervised part of this session.

**School 4hr Snow PE is a 4hr pass with the following benefits:**

- 4hr lift pass including equipment hire (skis/snowboard, boots & helmet)
- Excludes clothing and glove hire
- First session:
  - 1hr structured lesson from Snowplanet instructors (*approx. 1 instructor per 8 students*)
  - We do not require adult/teacher supervision
- Second session:
  - 3hr unsupervised freeride session
  - We encourage adult/teacher supervision





## OFF PEAK MONDAY - FRIDAY, 10AM - 3PM. EXCLUDES SCHOOL & PUBLIC HOLIDAYS

SNOW ACTIVITIES	CLASS		INCLUSIONS	PRICE PER PERSON
Snow PE	1hr Snow PE	- Motor Skill Development - Structured Lesson (1hr) - Progression-based learning	1 hour Snow Pass Boots & Skis or Snowboard Helmet - compulsory Includes 1 hour lesson	\$31
	4hr Snow PE	- Motor Skill Development - Structured Lesson (1hr) - Progression-based learning - Experiential learning (3hrs)	4 hour Snow Pass Boots & Skis or Snowboard Helmet - compulsory Includes 1 hour lesson 3 hrs unsupervised	\$50
Snow FUN	1hr Tubing	- Participate & Contribute	1 hour Snow Tubing Pass Snow Tube & Boots Unsupervised	\$19
	2hr Snowsports	- Experiential learning - Motor Skill Development	2 hour Snow Pass Boots & Skis or Snowboard Helmet - compulsory Includes 2 hour supervision only (Year 5 and older only)	\$25 (24-49 Students) \$20 (+50 Students)
	4hr Freeride	- Experiential learning - Participate & Contribute	4 hour Snow Pass Boots & Skis or Snowboard Helmet - compulsory Unsupervised (Year 5 and older only)	\$39

## PEAK MONDAY - FRIDAY, 3PM TILL CLOSE + WEEKENDS. EXCLUDES SCHOOL & PUBLIC HOLIDAYS

SNOW ACTIVITIES	CLASS		INCLUSIONS	PRICE PER PERSON
Snow PE	1hr Snow PE	- Motor Skill Development - Structured Lesson (1hr) - Progression-based learning	1 hour Snow Pass Boots & Skis or Snowboard Helmet - compulsory Includes 1 hour lesson	\$36
	4hr Snow PE	- Motor Skill Development - Structured Lesson (1hr) - Progression-based learning - Experiential learning (3hrs)	4 hour Snow Pass Boots & Skis or Snowboard Helmet - compulsory Includes 1 hour lesson 3 hrs unsupervised	\$65

## ALL SCHOOL GROUPS

SNOW ACTIVITIES	NOTES	PRICE PER PERSON
Adult / Teacher Participant	Off Peak/Peak prices apply to all adults & teachers	See above
1 Supervising Adult per 10 Students	Boots, Jacket, Pants & Gloves will be provided Subject to availability	N/A
Rental Clothing - Jacket or Pants	Subject to availability	\$11
Rental Clothing - Jacket AND Pants	Subject to availability	\$19
Rental Combo - Jacket, Pants & Gloves	Subject to availability	\$24
Rental Gloves	Subject to availability	\$7
Morning or Afternoon Tea	Pre-booking required	\$7.50
Lunch	Pre-booking required	\$10

Available for Year 1-13 students (ages 5-18). Food and beverage packages available upon request. Minimum of 15 students for Snow Tubing. Minimum of 8 students for Ski / Snowboard activities. Additional discounts available to schools who book multiple visits.